



## Trip description

### 3 days of biking around the Somme bay

Discover our self-guided cycling holidays in Somme bay for a week-end or more. You ride at your own pace and enjoy the fauna and flora, parc du Marquenterre, the famous seals and the charming fishermen villages.

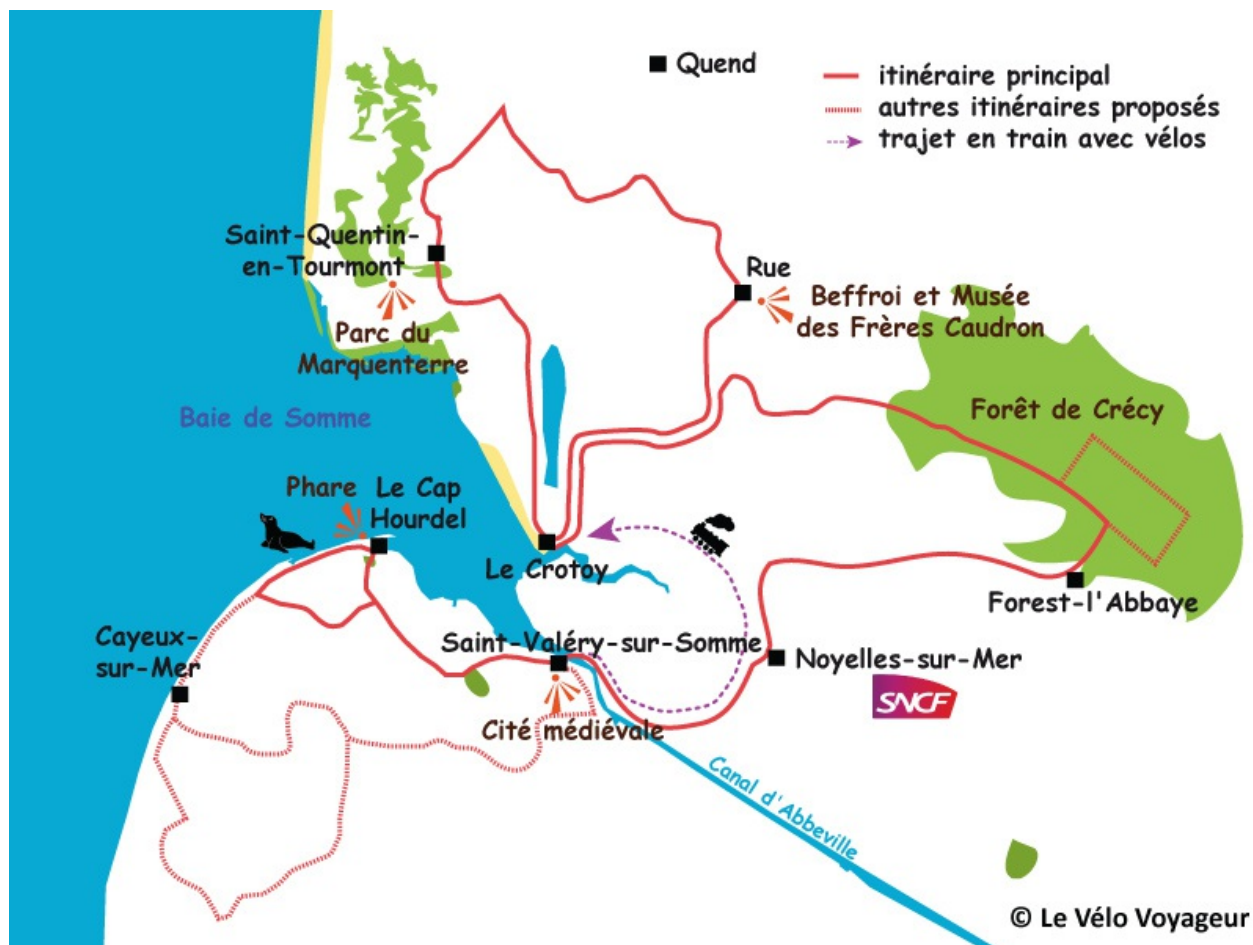


Destination	France
Location	Baie de Somme
Duration	3 days
Difficulty Level	Very easy
Validity	from 1st April to 6 October
Minimum age	1 year
Reference	BS0301

Type of stay  
loop trip



### Itinerary



You are longing for a deep breath of fresh air? Somme bay is the destination you are searching for a short cycle break. The charming seaside towns

of Saint-Valéry and Le Crotoy will seduce you with their tranquility and warm welcome. Beaches and nature won't be left out of the programme: your bike tour will lead you to Cap Hourdel, the bird park of the Marquenterre or the forest of Crécy. You will be able to choose your itinerary among many propositions according to your mood!

### DAY 1

#### Round trip from Saint-Valéry

Bike  
26/38/49km

You can choose among different excursions around Saint-Valéry. You can go for the short option (26km) which takes you to the Cap Hourdel on a comfortable cycle path. After passing the lighthouse of Cap Hourdel, you keep on biking on the "white road", a wonderful cycle path along the sand dunes of the Channel before riding back towards Saint-Valéry. A longer tour (38 or 49km) takes you first in the back country through the small villages till Cayeux-sur-Mer. You cycle further on the "white road" and pass by the Cap Hourdel before going back to Saint-Valéry-sur-Somme on the cycle path along the bay.

### DAY 2

#### Saint-Valéry - Le Crotoy

Vintage train

#### Round trip to the Marquenterre

Bike  
36km

You start your day in a ride in the vintage train of the Somme bay with your bikes from Saint-Valéry-sur-Somme to Le Crotoy. You ride on the seawall of Le Crotoy and along the ponds of Les Morettes inhabited by numerous birds. Through small lanes in the countryside you reach the park of Marquenterre where we strongly suggest you to make a stop. Then follow the cycling path amongst the pine trees to the city of Rue. This former seaport and fortified town is proud of its medieval battle tower, its two churches and the inheritance of the Caudron brothers, pioneers in the aviation at the beginning of the 20th century. You come back to Le Crotoy through the countryside.

### DAY 3

#### Through the forest of Crécy

Bike  
43/52km

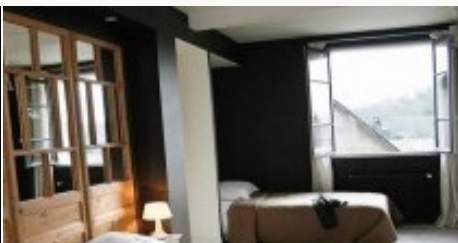
From Le Crotoy, today's tour takes you to the huge and beautiful forest of Crécy. Along the paths, you will admire the oaks and beech trees. If you have enough stamina, you can bike the longer option to observe the "warring brothers", an oak and a beech which grew embracing each other like siamese twins, each one fighting to protect its space. When leaving the woods, you will also admire the "Chartreux" oak, which is 500 years old. You cycle back to Noyelles-sur-Mer riding behind the hunting huts and keep on till Saint-Valéry on the cycle path around the bay.

## Accommodation



### Category B

You stay in hotels with \*\*/\*\* standards or bed & breakfasts selected for their style and quality. Breakfast is included.





\* Example of the type of accommodation

## Practical information

### To get to departure point:

**By plane:** flight to Paris.

**By train:** the closest train station is Noyelles-sur-Mer. To go to Saint-Valéry by taxi, you must budget about €15 (one way). You will find the contacts of the taxi companies in your travel documents.

From Gare du Nord station in Paris, take a direct Intercity train for Noyelles-sur-Mer (2h02) or take first an Intercity train for Amiens (1h) and then a regional train from Amiens to Noyelles-sur-Mer (40 min). It is possible that you must change of train in different cities like Amiens, Abbeville or Boulogne Ville (that depends on the day and the hour) when you have not the choice to take a direct train from Paris to Noyelles-sur-Mer. In that case, the journey will last more or less time to get to the final destination.

### Parking:

If you choose to drive, you can park your car for free for the duration of your stay at the bike pick up point in Saint-Valéry or at the car park of your accommodation if you booked a night before and after your trip. A parking is also available at the train station of Noyelles-sur-Mer.

### Meeting time:

You pick up your bikes in the morning **between 9.30am and 12.30pm**. We recommend you to arrive around 10am to enjoy your day fully without rushing. Please communicate your approximate hours of arrival and departure when you fill out the online booking form.

## Price description

### Category B

Double room fare

€329 /pers

2 nights in 2\*/3\* hotels

2 breakfasts

3-day rental of a fully-equipped bike (saddle bags, locks, toolkit)

a ride on a vintage train (with bikes)

the access to our mobile app including the roadbook and the practical and tourist information

7/7 hotline

You can start this trip everyday from the 3rd July to the 27th of August.

You can start this trip on Thursday or Friday (1st day by bike) from 1st April to 2nd July and from 28th August to 6th October.

High season (\*)

€20 /pers

Extra for a single room

€55 /night

Extra night in Saint-Valéry

€105 /pers

### Options

Extra for luggage transport

- 1 person

€90 /pers

- 2-3 people

€45 /pers

- from 4 people

€25 /pers

Entry ticket to the bird park of Marquenterre

€11.5 /adult

**(\*) High season :**

- from 05.01 to 09.17

**Children discount** (in the same room as 2 full rate participants):

0-4 year : -70%

5-11 year : -50%

12-17 year : -30%

The package doesn't include:

the journey to the tour location

the drinks

the meals which are not included

the entrance fee to sites

insurances (optional)

For more information or booking : [www.levelovoyageur.com](http://www.levelovoyageur.com)  
+33 (0)1 80 91 98 18 or [bonjour@levelovoyageur.com](mailto:bonjour@levelovoyageur.com)