



## Trip description

### Cycling weekend around Saint-Malo

Discover Saint-Malo and the surrounding area for a weekend by bike. From the Emerald Coast to Cancale, pedal your way through the corsair town and its hinterland.

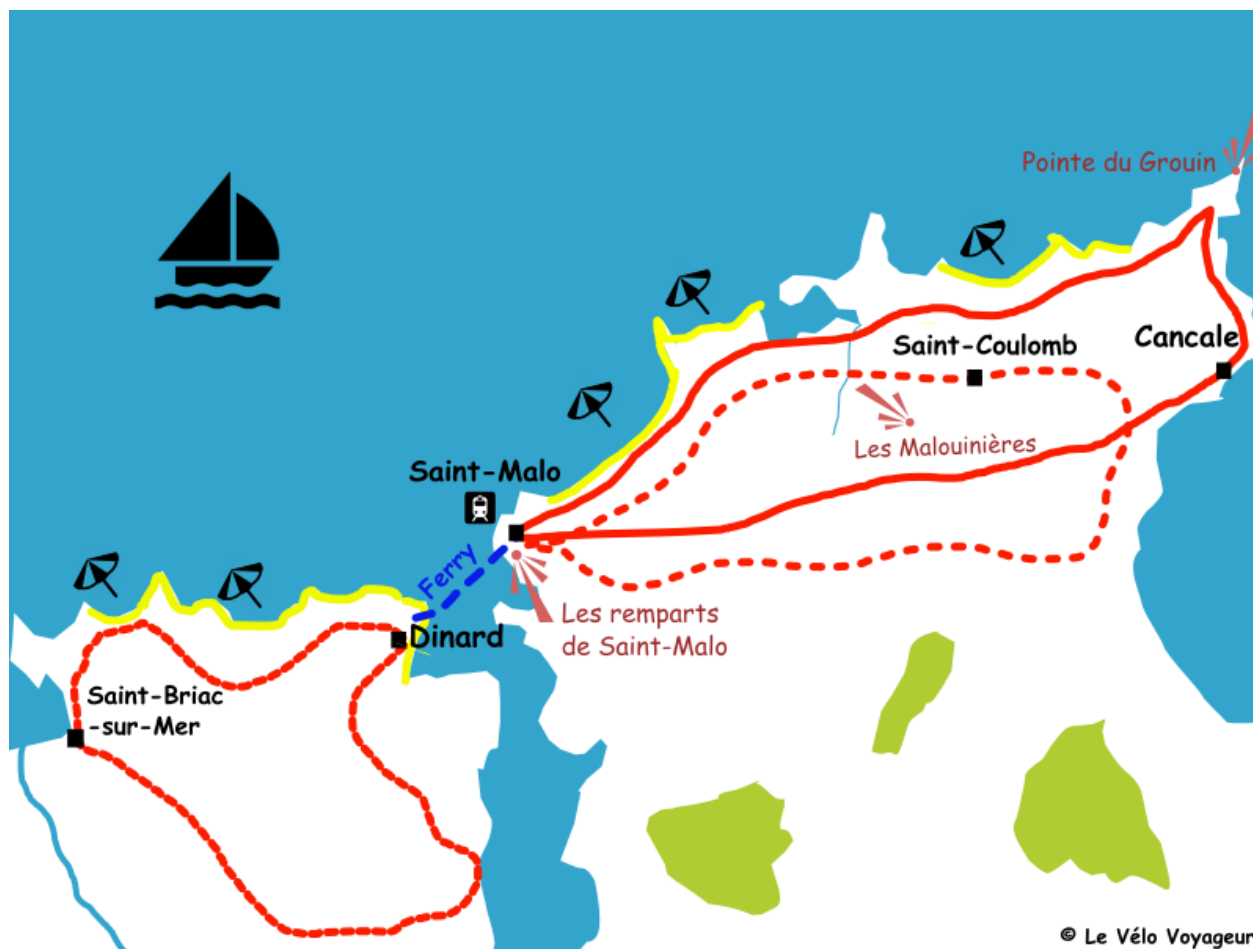


Destination	France
Location	Northern Brittany
Duration	3 days
Difficulty Level	Easy
Validity	From April to October
Minimum age	12 years
Reference	B0302

Type of stay  
centre based trip



### Itinerary



A long weekend to make the most of Saint-Malo and the Malouin hinterland. Three days to enjoy Brittany by bike, the ramparts of Saint-Malo, the

famous Malouinières and Dinard. Cycle around the Pointe du Grouin, breathing in the sea air. Pedal through the green countryside of Cancale and enjoy its marina, where you can taste its famous oysters.

This cycling weekend promises an invigorating Breton escape!

### Emerald coast loop tour

Bike  
40km

Be ready to explore the legendary Emerald coast! You ride from Dinard to reach Saint-Lunaire and Saint-Briac-sur-Mer with their large sandy beaches and discover a sea with a magnificent colour you will not forget. This is ideal for a break!

You ride then in the inland region of Dinard passing small countryside roads to reach the Rance river and Dinard, your starting point. Take the ferry with your bike to arrive in Saint-Malo.

### Suggested day trip : Cancale

Bike  
42km

Ride through the verdant countryside small routes to the Emerald Coast, where you will enjoy an amazing view onto the harbor of Cancale. You may even see the bay of Mont-Saint-Michel.

Bike down to the harbor and order some of the famous local oysters. You ride back then to Saint-Malo on the coastline road, along which you can take a few breaks on the small beaches scattered between "La Pointe du Grouin" and the city of pirates.

### Loop of Malouines

Bike  
26km

Discover the Malouinières from Saint-Malo. Wind your way through fields of cabbage, along quiet lanes and enjoy the homes of the shipowners of Saint-Malo. Often hidden behind the carved woodwork of formal gardens, these grand houses are typical of the Corsair city. Along the way, in Saint-Malo's Rothéneuf district, you can visit the Musée Jacques Cartier. This 16th-century manor house tells the story of the city's native explorer. Return to the city, alternating between cycle paths and secondary roads, and return to the ramparts along the seafront.

## Accommodation

### Category A

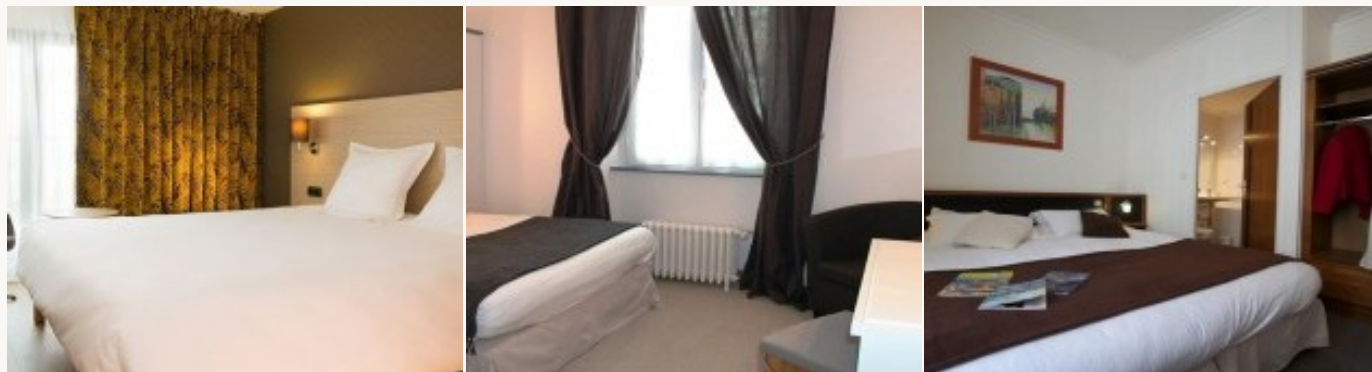
You'll get a good night's sleep when you stay in a 2 Star hotels. All properties have been selected for their cleanliness, style and friendliness of the staff. A hearty breakfast is included!



\* Example of the type of accommodation

## Category B

You'll get a good night's sleep when you stay in a 3 Star hotels. All properties have been selected for their cleanliness, style and friendliness of the staff. A hearty breakfast is included!



\* Example of the type of accommodation



You will get a good night's sleep when you stay in these 3/4-star hotels. All properties have been selected for their cleanliness, style and friendliness of the staff. A hearty breakfast is included!



\* Example of the type of accommodation

## Practical information

### To get to departure point:

**By plane:** flight to Rennes then train to Saint-Malo.

**By train:** TGV (fast trains) from Paris Montparnasse. The duration of the trip is about 2h20. To plan your trip, [www.raileurope.com](http://www.raileurope.com).

### Parking

If you drive to Saint-Malo, you can park your car in a secured car park located in the city center. The weekly rate is about €25. All details will be given in your travel documents.

### Meeting time:

You pick up your bikes in the morning between 9.30am and 12.30pm at a meeting time set together during booking. We recommend you to arrive around 10am to enjoy your day fully without rushing.

Bikes pick up point and luggage drop off point will be given in your travel documents.

## Price description

### Category A

Double room fare

250 €/pers

2 nights in \*\* hotels

2 breakfasts

3-day rental of a fully-equipped bike (saddle bags, locks, toolkit)

the boat ride from Dinard to Saint-Malo with bikes

the access to our mobile app including the roadbook and the practical and tourist information

7/7 hotline

High season extra (\*)

30 €/pers

Extra for a single room

67,5 €/night

Extra night in Saint-Malo

75 €/pers

---

### Category B

Double room fare

279 €/pers

2 nights in \*\*\* hotels or B&B's

2 breakfasts

3-day rental of a fully-equipped bike (saddle bags, locks, toolkit)

the boat ride from Dinard to Saint-Malo with bikes

the access to our mobile app including the roadbook and the practical and tourist information

7/7 hotline

High season extra (\*)

20 €/pers

Single room extra

55 €/night

Extra night in Saint-Malo

85 €/pers

---

### Category C

Double room fare

379 €/pers

2 nights in \*\*\*/\*\*\*\* hotels

2 breakfasts

3-day rental of a fully-equipped bike (saddle bags, locks, toolkit)

the boat ride from Dinard to Saint-Malo with bikes

the access to our mobile app including the roadbook and the practical and tourist information

7/7 hotline

High season extra (\*)

20 €/pers

Extra for a single room (\*\*)

115 €/night

Extra night in Saint-Malo low season

100 €/pers

Extra night in Saint-Malo high season (\*\*)

135 €/pers

---

### Options

Extra E-bike (3 days)

55 €/pers

Discount if you ride your own bicycle

-80 €/pers

#### (\*) High season :

from 29.06.2024 to 01.10.2024

#### (\*\*) High season Saint-Malo

from 10.07 to 25.08.2024

#### Children discount (in the same room as two full rate participants)

0-4 years : -70%

5-11 years : -50%

12-17 years : -30%

The package doesn't include:

the journey to the tour location  
the drinks  
the meals which are not included  
the entrance fee to sites  
insurances (optional)  
local taxes visitor

For more information or booking : [www.levelovoyageur.com](http://www.levelovoyageur.com)  
+33 (0)1 80 91 98 18 or [bonjour@levelovoyageur.com](mailto:bonjour@levelovoyageur.com)