



Trip description

Cycling tour in Puglia from trulli to the sea

Self-guided cycling holidays with GPS from Alberobello to Lecce, from the trulli to the sea, discover the sweetness of life in Southern Italy.



Destination	Europe
Location	Les Pouilles
Duration	8 days
Difficulty Level	Moderate
Validity	From mid-February to end-Nov..
Minimum age	14 years old
Reference	IP0801

Type of stay
itinerant trip



Itinerary



Rich of a thousand-year-old history, occupied successively by Greeks, Romans, Arabs and Normans, Puglia is welcoming you for an authentic cycling

trip. Your journey begins in the trulli region, where you can admire this famous little houses gleaming in Alberobello then lost in the wild in the green valley of Istria. Peaceful country roads are taking you through olive groves and vineyards and through white villages with a discreet charm. You keep riding through the province of Salento passing by Lecce, which will offer you its wonders of Baroque architecture. Then you ride to the coast dotted with ancient fortified ports like Gallipoli and Otranto, limestone cliffs or sandy beaches. Swimming and culinary discoveries on the way will make you thoroughly enjoy the Italian "dolce vita".

DAY 1

Arrival in Alberobello

After transfer from the airport, stroll leisurely in Alberobello, the capital of the famous Trulli. These houses with roofs of dry stone mounted in a cone shape give a picturesque charm to the city, a World Heritage Site by Unesco. The hills of the city are lined with these roofs, from top of which you can catch lovely views on the city.

DAY 2

Alberobello - Ostuni

Bike
37km

You ride through the fertile valley of Istria, surrounded by wooded hills, vineyards and huge olive groves. On the way, you cross white villages which will remind you of Greece. You will also get the chance to taste the typical white wines of the region, including the one of Locorotondo. You get to Ostuni, the white city, where you can admire the cathedral and many palaces.

DAY 3

Ostuni - Lecce

Train

You reach Lecce by train in a small hour and then wander through the baroque city of Lecce, capital of the province of Salento. Discover the cathedral, the Duomo di Lecce, and the Bishop's Palace, both of which form one of the most beautiful baroque ensemble of Italy. Then admire the Basilica of Santa Croce, which impresses with its profusion of carved decorations. We advise you to take an ice cream in the evening on the piazza S. Oronzo for its bustling atmosphere.

DAY 4

Lecce – Gallipoli

Bike
60km

You ride on quiet country roads in the middle of olive groves. You cross the city of Galatina, labeled "city of art" for its rich baroque architecture. Discover the historical center surrounded by ramparts and do not miss the Santa Maria Alessandra basilica, which boasts magnificent frescoes from the late 14th century. You continue through the countryside to Galatone, discover the church of Santuario della Pietà Crucifix and the remnants of its castle. You keep on riding to the coast of the Ionian Sea and reach Gallipoli. Old fishing port surrounded by a fortress, the city spans tradition and modernity, between its remarkably preserved historic center and its lively party spots.

DAY 5

Gallipoli - Santa Maria di Leuca

Bike
52km

You continue your bike ride to Santa Maria di Leuca at the tip of the heel of Italy. You ride along the coast and can make a halt on some of the most beautiful beaches in southern Italy: Lido Marini, Pesculuse Torre Vado. The city of Santa Maria di Leuca, dominated by its lighthouse, is a popular retreat for Apulians and is very enjoyable for its relaxed lifestyle.

DAY 6

Santa Maria di Leuca - Otranto

Bike
62km

You continue along the coast and enjoy the magnificent views of the sea from cliffs. On clear days, you can even see the coastline of Albania. Today, you can bathe in the fresh water of natural streams : Castro Marina, Santa Cesarae term or Porto Badisco. Your day ends in Otranto, a pretty town built around its ancient trading port.

DAY 7

Otranto - Lecce

Bike
55km

Start your day visiting Otranto. Explore the Aragonese castle before you stroll in the cathedral, which stands out for its magnificent rose window and the beautiful mosaic adorning its soil. You ride to Lecce sometimes along the coast, sometimes on back country roads lined with stone walls and olive trees. You go through villages built around their medieval castle before reaching Lecce.

DAY 8

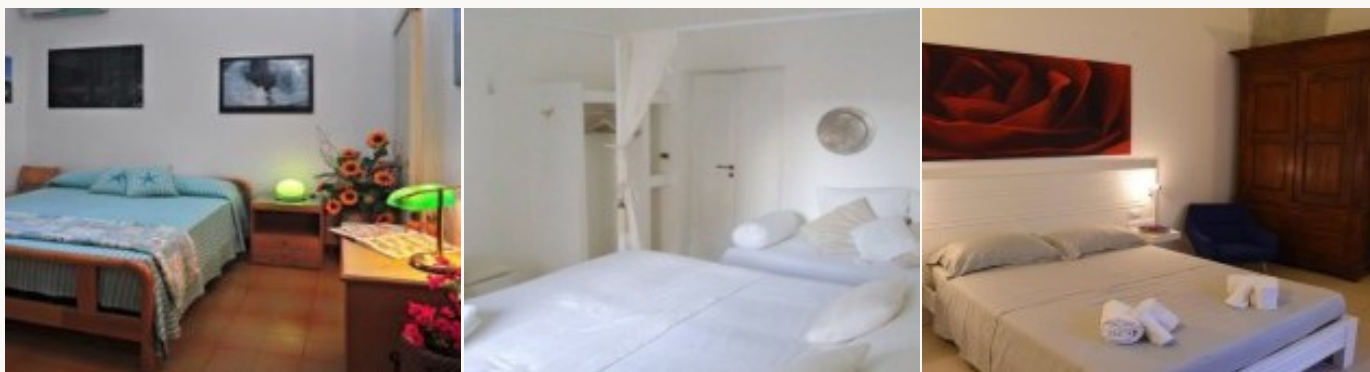
Departure from Lecce

Transfer from your departure airport, Bari or Brindisi.

Accommodation

Category A

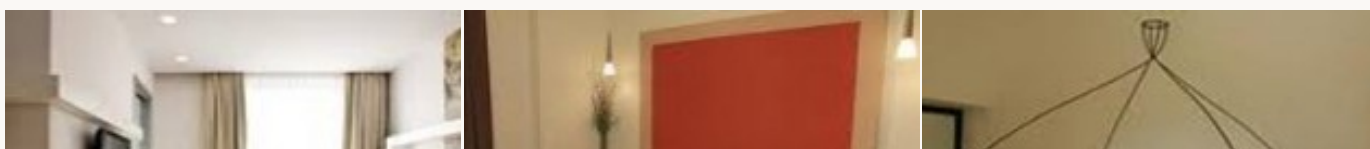
You stay in bed & breakfasts selected for their quality and authenticity. Your hosts welcome you warmly after your daily ride. Breakfast is included.



** Example of the type of accommodation*

Category B

You are staying in *** or **** hotels selected for their comfort and the service quality. Breakfast is included.





* Example of the type of accommodation

Practical information

To get to Alberobello:

From Beauvais airport, take a flight to Brindisi (2h30 of flight) or Bari (2h20 of flight).

We inform you that the price of the bike tour includes the airport transfer (Brindisi or Bari) to Alberobello and the transfer from Lecce to Brindisi airport only. We can also transfer you to Bari airport but with an extra (longer distance).

Price description

Category A

Double room fare

849 €/pers

7 nights in bed&breakfasts

7 breakfasts

8-day rental of a fully-equipped bike (saddle bags, locks, toolkit)

the luggage transport from one lodging to the other

the transfer back and forth from the airport to your accommodation (Brindisi airport)

the return of the bikes

a GPS with the routes (one for 2 persons)

the touristic information

local visitors' taxes

24h/24 hotline

Middle season extra (*)

155 €/pers

High season extra (*)

220 €/pers

Single occupancy extra (**)

33 €/night

Extra night in Alberobello

75 €/pers

Extra night in Lecce

75 €/pers

Category B

Double room fare

1099 €/pers

7 nights in *** or ****hotels

7 breakfasts

8-day rental of a fully-equipped bike (saddle bags, locks, toolkit)

the luggage transport from one lodging to the other

the transfer back and forth from the airport to your accommodation (Brindisi airport)

the return of the bike

a GPS with the routes (one for 2 persons)

the touristic information

local visitors' taxes

24h/24 hotline

Middle season extra (*)

160 €/pers

High season extra (*)

245 €/pers

Single occupancy extra (**)

44 €/night

Extra night in Alberobello

90 €/pers

Extra night in Lecce

90 €/pers

Option

Electric bike	170 €/pers
Extra cost transfer Lecce-Bari	30 €/pers

(*) Middle season :

from 01.06 to 14.07 and from 24.08 to 22.09.2020

(*) High season :

from 07.04 to 14.04.2020

from 15.07 to 23.08.2020 (we strongly advise against july/august)

(**) These prices are guaranteed for 2 participants minimum.

The package doesn't include:

the journey to the tour location

the train ride from Ostuni to Lecce (estimated price 5,5 €/pers)

the drinks

the meals which are not included

the entrance fee to sites

insurances (optional)

For more information or booking : www.levelovoyageur.com
+33 (0)1 80 91 98 18 or bonjour@levelovoyageur.com